



## President's Perspectives - Annual Meeting

In the next few days you should see copies of the agenda and background information for the Congregation's Annual Meeting scheduled for Sunday, October 25. This is going to be a meeting where you will learn both where we have been this past year but even more important where we believe God is leading us for the next year. Get this on your calendars now! You won't want to miss this event.

Come hear what the staff and Council have to say about how 2015 has gone in their reports as well as getting an update on our finances.

Get an update on progress toward the goals of the Guide and Vision, our long range plan. Council approved a few changes which you will also hear about.

You will get to vote on your leadership as we add members to the Nominating Committee and to the Council membership. Three of the five officers will be new next year and there will be at least one new member at large on Council. That is a significant turnover.

We will look to our future as we consider a proposed Annual Ministry Plan for 2016 and a budget to support it. At the time of my writing this article the budget numbers had not been finalized but I am expecting that the final proposed budget for your consideration will be lower than in 2015 but have a higher percentage allocated to Benevolences.

And, yes, your President may test your knowledge of scripture with a short Bible quiz during pauses in the meeting. Read through the Bible and come prepared.

Dave Larkin – Congregation President

Call me (509-628-0420) or Email me ([dllarkin@charter.net](mailto:dllarkin@charter.net)) if you have thoughts, suggestions, complaints, or want to become more involved in our church's ministries.

## Congregation Council

### **Council Members**

**Norm Gillette**, Member at Large  
**Sarah Hagensen**, Member at Large  
**Dave Larkin**, President  
**Todd Maier**, Member at Large  
**Rich Olsen**, Financial Officer  
**Don Schmid**, Member at Large  
**Joel Sorensen**, Secretary  
**Sandy Steele**, Vice President  
**Mike Strasburg**, Member at Large

### **Ex Officio Member**

**Pastor Steve Ernst**, Lead Pastor

Minutes of Council meetings are available on the website and in the church library.

## Staff

### **Rev. Steve Ernst, Lead Pastor**

Christian Service Ministry Lead  
Biblical Stewardship Ministry Lead  
pastor.steve@richlandlutheran.org

### **Kelly Westlund, Ministry Assistant for Christian Service**

kelly.westlund@richlandlutheran.org

### **Lisa Wiegand, Ministry Assistant for Biblical Stewardship**

lisa.wiegand@richlandlutheran.org

### **Rev. Corey Smith, Associate Pastor**

Spiritual Transformation Ministry Lead  
pastor.corey@richlandlutheran.org

### **Jenny Page, Ministry Assistant for Spiritual Transformation**

jenny.page@richlandlutheran.org

### **Joseph Farrar, Director of Music and Worship**

Worship Ministry Lead  
joseph.farrar@richlandlutheran.org

### **Joanne Woehle, Ministry Assistant for Worship**

joanne.woehle@richlandlutheran.org

## Member Directory Changes

Scripture taken from the HOLY BIBLE, NEW INTERNATIONAL VERSION<sup>®</sup> NIV<sup>®</sup>. Copyright © 1973, 1978, 1984, 2011 by Biblica, Inc.<sup>™</sup> Used by permission of Biblica, Inc.<sup>™</sup> All rights reserved worldwide.

## Pastoral Acts

### **Baptisms**

September 30 Lily Margaret Dagle

### **Weddings**

September 6 Melissa Woehle and John Carter

### **Memorial/Funeral**

September 26 Walter Norbeck

### **The Preview**

is published monthly by Richland Lutheran Church for members and friends of the congregation. *The Preview* is distributed free of charge. Please report address changes to 901 Van Giesen, Richland, WA 99354, call 509-943-3164, fax 509-943-5383, or e-mail office@richlandlutheran.org. Richland Lutheran Church grants permission for any original content (not a reprint) to be photocopied for noncommercial, local church, or personal use, provided the copies indicate the source is *The Preview*. For any other usage, advance permission must be obtained. Electronic versions of *The Preview* may be forwarded in their entirety for noncommercial, local church, or personal use as well.

## From Pastor Steve

DID YOU  
KNOW



**Did you know...**There are animals in the sanctuary? Yeah, it's true and I'm not just talking about Cougars, Huskies, Wildcats, Eagles, Bulldogs and the rest. Displayed in the wood slates to either side of the pulpit behind the altar are the four "living creatures" as listed in Revelation 4:7, "*The first living creature was like a lion, the second was like an ox, the third had a face like a man, the fourth was like a flying eagle.*" Over the years these living creatures which surround God's throne have come to represent the four Gospels. Though there is some argument about which animal refers to which Gospel most agree the lion represents the Gospel of Mark, the ox represents Luke, the human/angel represents Matthew, and the Eagle represents John.

**Did you know...**We at Richland Lutheran Church operate by a set of core values? These values help us to focus on living lives which glorify and honor God as well as foster healthy relationships.

- We value **spirituality** and spiritual things (having to do with things of the spirit and spiritual nature) as opposed to temporal, earthly, or human things.  
**Colossians 3:1-5** -- "So if you have been raised with Christ, seek the things that are above, where Christ is, seated at the right hand of God. Set your minds on things that are above, not on things that are on earth, for you have died, and your life is hidden with Christ in God. When Christ who is your life is revealed, then you also will be revealed with him in glory. Put to death, therefore, whatever in you is earthly."
- We value **love** in the way we relate to and interact with God and others.  
**Luke 10:27** -- "You shall love the Lord your God with all your heart, and with all your soul, and with all your strength, and with all your mind; and your neighbor as yourself."
- We value **truth** and honesty spoken and lived in a loving environment  
**Ephesians 4:25** -- "So then, putting away falsehood, let all of us speak the truth to our neighbors, for we are members of one another."
- We value **accountability** between one-another when done with care, trust, and respect  
**Galatians 6:1-2** -- "My friends, if anyone is detected in a transgression, you who have received the Spirit should restore such a one in a spirit of gentleness. Take care that you yourselves are not tempted. Bear one another's burdens, and in this way you will fulfill the law of Christ."
- We value **integrity** in all we become and do.  
**Titus 2:6-8** -- "Likewise, urge the younger men to be self-controlled. Show yourself in all respects a model of good works, and in your teaching show integrity, gravity, and sound speech that cannot be censured; then any opponent will be put to shame, having nothing evil to say of us."

**Did you know...**Joanne Woehle celebrated twenty one years of employment and service to our congregation on September 21, 2015? Wow! What an accomplishment. Her job has changed, pastors have changed, the congregation has changed, our mission has changed many times around Joanne but she has been a stable rock upon which we have depended. Though having only worked five of those years with Joanne I have come to value and appreciate her tremendously. She is a true minister of the Gospel of Jesus Christ and I am grateful for her partnership and friendship. In the next few weeks I encourage you to find a way; write a note, send an email, post on Facebook, speak in person, to encourage Joanne. Thank her for her faith and obedience to God and our congregation and communicate your appreciation to her. She certainly deserves it!



## Financial Update

As reflected in the financial summary below, the financial results have been behind budget so far this year. Our offerings are down \$(9,439) or 2.0% less than last year for the same period. Our expenses are up \$3,816 or .7% more than the same time last year. For the year, our offerings are below expenses by \$(40,424) compared to \$(27,169) in 2014, a change from last year of \$(13,254). These results are reflected in the columns titled "Prior Year Comparison".

	Year to Date			Prior Year Comparison		
	Actuals	Budget	Variance	YTD '15	YTD '14	Variance
Offering / Income	\$ 474,163	\$ 529,200	\$ (55,037)	\$ 474,163	\$ 483,602	\$ (9,439)
Expense	<u>\$(514,587)</u>	<u>\$(549,747)</u>	<u>\$ (35,160)</u>	<u>\$(514,587)</u>	<u>\$(510,771)</u>	<u>\$ 3,816</u>
Profit / (Loss)	<u>\$ (40,424)</u>	<u>\$ (20,547)</u>	<u>\$ 19,887</u>	<u>\$ (40,424)</u>	<u>\$ (27,169)</u>	<u>\$ (13,254)</u>

For the year, actual offerings are below budget by \$(55,037) and actual expenses are under budget by \$(35,160). The decrease in expense is primarily due to underruns in salaries and benefits.

With summer just ending, we encourage each of you to continually give faithfully and consistently throughout the remainder of the year. Historically, our giving during the summer months have been approximately 15% below the average giving for the year.

If you have any questions regarding this financial summary, please contact Lisa Wiegand or me.  
In his Service,  
Rich Olsen

## Lutheran World Relief

On October 23, we will be sending off our shipment to Lutheran World Relief. In the spring, we collected items for the health kits. In August, we collected school supplies to fill the backpacks. Now, in October, we are asking for baby care items for the layettes.

Needed items are:

- Undershirts/onesies
- Gowns/sleepers without feet
- Receiving blankets
- Cloth diapers (flat fold)
- Sweaters or sweatshirts
- Mild bath size (4-5 oz) soap, such as Ivory

Supplies can be left in the large plastic box under the mailboxes marked LWR. We also would welcome monetary contributions to help pay for materials and shipping as well. Make your checks payable to RLC, earmarking it for LWR kit fund.

Packing day is October 19 at 9:00 AM in the Prince of Peace fellowship area.

Any questions? Call LaVonne Scully at 375-4153



## From the Council

### Five Years' Time

It's Staff Development Review time at work. The time of year we compare the goals set out at the beginning of the year to the actual accomplishments completed. Part of this process is setting objectives for the future, which involves answering the question, "Where do you see yourself in 5 years?"

Am I working at the same desk or a different one? Am I in the same department or working with a different group of people? Am I even working or retired? Some of the answers are based in reality. The last one probably involves more hope.

This always gets me thinking about other aspects of my life in 5 years' time. This year it occurred to me to think about what I should pray for in 5 years. This seemed odd to me.

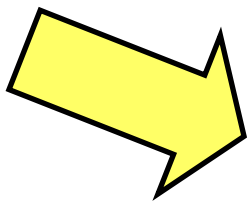
I've become used to praying for immediate things. We pray for the food we are about to eat. We pray for friends after they've fallen ill. We pray for rain to help with the fires and I'm pretty sure my children pray for good grades after they realize they haven't studied as much as they should.

Prayer is not a magic wand that will instantly rescue us from immediate dangers and temptations. Prayer is a constant, ongoing communication between you and God. God doesn't work on things at the very last minute. He is constantly involved in our lives. He is not only concerned in the here and now, but in the future as well.

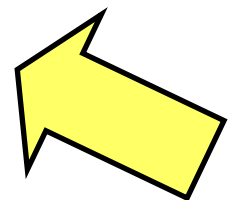
So when you pray, take a moment to pray for those future things as well. Pray for RLC's 5-year plan. Pray for your own 5-year plan. Pray that your child would one day find a good spouse and have a happy future. Pray that you will have good health to see it. Pray that you would be led into a vocation that would be pleasing to God and rewarding to you personally. Pray that your retirement years would be joyful, even though they may be several years away. Pray that the Lord of heaven and earth would direct and guide you all the days of your life.

Don Schmid, Member at Large

## Annual Congregational Meeting



Sunday, October 25, 2015  
12:30 PM



Mark your calendar!

## Benevolence Thanks

Dear Friends,

We recently received your gift to **Lutheran World Relief**. Thank you! I'd like to share a story of the great work your gift will support.

Maria del Cid Aguilar is a coffee farmer who lives in El Salvador. Coffee is a lucrative crop with the potential to lift farmers like Maria out of poverty. But recently, a crop disease called *la roya* (leaf rust) has threatened her livelihood. The disease is particularly devastating because it kills coffee trees and it can take years for new trees to grow to replace that production.

With your generosity, LWR is reaching out to coffee farmers in Central America to combat this problem. Your gift makes it possible to help farmers diversify their crops. Maria received cocoa seedlings, along with agricultural training, to grow cocoa along with her coffee crops. Cocoa can withstand heat and humidity and this second crop reduces her family's dependence on coffee production for income.

That's just one example of how your gift changes lives around the world. I hope you will visit our website or blog to learn about more stories!

On behalf of LWR, our partners, and those we serve, please accept my thanks for your generous support and partnership. May God bless you!

Warm Regards,  
Daniel V. Speckhard, President and CEO

\*\*\*\*\*

Dear Friend,

Thank you for your recent gift and faithful response to God's call to care for the poor and oppressed. The Bedouin of Jordan certainly fit the description of people Jesus described as "the least of these." It is a joy to partner with you in serving God, bringing hope and healing to these beautiful people.

Please continue to pray for the work of the **Annoor Sanitorium**. May the true Light of the World shine brightly in the hearts of the Bedouin people!

In His love,  
Dave Haas, Managing Director

\*\*\*\*\*

Dear Friends,

I want to thank you for your gift to **Compassion's** Where Most Needed Program.

Your partnership and concern for children in poverty is truly making a difference. We sincerely appreciate the way you have supported this ministry and placed your trust with us.

Your generosity is accomplishing so much in the lives of children around the world! May God reward you for your faithfulness and bless you richly.

In Christ,  
Santiago "Jimmy" Mellado, President and CEO

# Block Party 2015



**Games, prizes,  
inflatables and face  
painting!  
Lots of fun!!**



**Good food  
and great  
conversations!**



**Family,  
friends  
and  
neighbors!!**

## From the Nominating Committee

The Nominating Committee would like to thank the congregation for entrusting us with the task of choosing the nominees for the 2016 Congregational Council. After several meetings and prayerful consideration, we have chosen the following people for your consideration at the Congregational meeting. Below you will find their pictures and short bios of the nominees.



Bob Thompson

I was born in Yankton, South Dakota; the third son in a family of six. My parents raised us in a Christian (Methodist) home; the church a constant center of our home life. My mother, now 95, still worships weekly in my childhood church. I met Marie when I was a senior in high school, we were married seven years later at Trinity Lutheran Church in Rapid City, SD. We moved to Richland in January of 1989 and began attending Richland Lutheran, joining in the spring of that year. We have raised our three children (Seth, Luke and Jessi) at RLC and have celebrated many joys as well as weathered many of life's storms through the fellowship, support and love of our friends and pastors at RLC. RLC is our church home.

I have been a research (electrical) engineer, project manager and manager at PNNL through these years. My positions have allowed me to travel extensively and now I enjoy a role that keeps me mostly at home—something I appreciate! Through our years in Richland, Marie's highest priority has been raising our family; when Jessi started school she took a position in the Richland School District where she works today. We enjoy the Pacific Northwest, especially Mount Rainier National Park, time spent at the ocean and often make an annual pilgrimage to South Dakota—to see family and friends and most recently to visit Luke and Jessi at college in Rapid City.

My passion for RLC runs deep and I have served several different ministries including previous assignments on the RLC Council and the Long Range Planning Team. I believe my most notable contributions include our youth retreat ministries (confirmation, beach trips) and Good News Media Ministry. The most profound event in my time at RLC was the arrival of Pastor Steve. Through Steve, Jesus has made Himself known to me more than through any other person. I am grateful for the opportunity to serve with Steve and to partner with all of the staff in support of God's ministries at RLC. I believe that as God's plan continues to unfold for us that we have a great opportunity and responsibility to be a much needed light for the people of the Tri-Cities! As I reflect on one of my favorite passages from the Bible, this rings especially true: *<sup>19</sup> Therefore go and make disciples of all nations, baptizing them in the name of the Father and of the Son and of the Holy Spirit, <sup>20</sup> and teaching them to obey everything I have commanded you. And surely I am with you always, to the very end of the age.*" (Matthew 28:19-20). The promise that Jesus makes, "... I am with you always, to the very end of the age.", gives me a personal reassurance that He is with us and confidence that we are following the path He has set before this congregation. I am looking forward to continuing my walk with Jesus and with each of you on His path; it is going to be a very great and exciting journey!



## From the Nominating Committee



Rick Snyder

I have lived my entire life in Richland. While attending EWU I met my wife, Kathy. We have been married 33 years. After we were married we joined RLC. We raised both of our children, Brooke and Drew, in the church. Brooke got married in July and has moved to Portland. In December Drew will be coming home until he decides about college. Kathy and I like to travel. A couple of my hobbies are golf and photography.

I am owner and general manager of U.S. Linen & Uniform. It is a family business started by my grandfather in 1944. My great-grandfather had a laundry and dry cleaner in Walla Walla he started in 1901. Our family has been in the cleaning business for almost 115 years. The business keeps me busy. We recently opened a new branch in Portland. Kathy recently retired from 30 years as a dental hygienist.

I have held many different positions in the church over the years. Presently I am Treasurer of the Good News Media Ministry. I am excited to be Financial Officer during the time that hopefully we will be expanding our building. It will not be easy to raise the money needed for this but Romans 8:28 says *"And we know that in all things God works for the good of those who love him, who have been called according to his purpose."*

I was born in Pipestone, Minnesota and raised on the family farm near Flandreau, South Dakota until I was nine. My father and grandfather were killed in a car accident near our farm, so my mother with her four children moved to Idaho Falls, Idaho.

I attended secretarial school at Idaho State University and found employment with Westinghouse Corp. at the Navy training facility. My husband Rick and I met at a friend's house and attended First Lutheran Church, where we were married while he was still in the U.S. Navy. When Rick's enlistment was up, we moved to Columbia City, Oregon, where we lived for 23 years and raised our two daughters, Gretchen and Alyce.

We moved to Richland from Oregon in 1994 and have been members of Richland Lutheran Church since then. I worked for the Port of Benton for eleven years as an administrative assistant and retired in December, 2011. My hobbies include sewing, reading, gardening, getting together with our friends and spending time with our children, their spouses and three grandsons. Also among my interests is our 1931 Ford Model "A". We are active members of the Model "A" Club, where I currently serve as secretary.

I appreciate the nomination to serve as a member of the church council and look forward to doing what I can to help spread the word of our Lord and Savior Jesus Christ.



Janet Budzeck

## October 2015

Sun

Mon

Tue

### The Richland Lutheran Church calendar changes daily!

Please call the church office, 943-3164, or check the website, [www.richlandlutheran.org](http://www.richlandlutheran.org), for the most current information. Please note that not all activities, especially Growth Group meetings and Circles, are actually held at the church.

**4**

8:30 AM Worship  
 9:00 AM Good News Today - KVEW TV  
 9:45 AM Education Hour/HeBrews Café  
 11:00 AM Worship  
 5:30 PM HS Discipleship Team  
 6:30 PM Coffeehouse  
 7:00 PM Haler/Worgull Bible Study

**5**

9:00 AM Play Date  
 12:00 PM Mary Martha Growth Group  
 4:30 PM Executive Committee  
 4:30 PM Praise Band Rehearsal

**6**

9:30 AM Staff Meeting  
 6:30 PM Cub Scouts  
 7:00 PM Boy Scouts  
 7:00 PM Congregation Council

**11**

8:30 AM Worship  
 9:00 AM Good News Today - KVEW TV  
 9:45 AM Education Hour/HeBrews Café  
 11:00 AM Worship  
 1:00 PM Confirmation Retreat Return  
 5:30 PM HS Discipleship Team  
 6:30 PM Coffeehouse  
 7:00 PM Haler/Worgull Bible Study

**12**

9:00 AM Play Date  
 12:00 PM Mary Martha Growth Group  
 4:30 PM Praise Band Rehearsal

**13**

7:00 AM Men's Prayer Breakfast - Denny's  
 9:30 AM Staff Meeting  
 5:00 PM New Members Team  
 6:30 PM Cub Scouts  
 6:30 PM Facilities Building Committee  
 7:00 PM Boy Scouts

**18**

8:30 AM Worship  
 9:00 AM Good News Today - KVEW TV  
 9:45 AM Education Hour/HeBrews Café  
 11:00 AM Worship  
 5:30 PM HS Discipleship Team  
 6:00 PM Confirmation Banquet  
 7:00 PM Haler/Worgull Bible Study

**19**

9:00 AM Play Date  
 12:00 PM Mary Martha Growth Group  
 4:30 PM Praise Band Rehearsal

**20**

9:30 AM Staff Meeting  
 6:30 PM Cub Scouts  
 6:30 PM Facilities Building Committee  
 7:00 PM Boy Scouts

**25**

8:30 AM Worship  
 9:00 AM Good News Today - KVEW TV  
 9:45 AM Education Hour/HeBrews Café  
 11:00 AM Worship  
 12:30 PM Annual Congregational Meeting  
 5:30 PM HS Discipleship Team  
 6:30 PM Coffeehouse  
 7:00 PM Haler/Worgull Bible Study  
 7:30 PM Union Gospel Mission Service

**26**

9:00 AM Play Date  
 12:00 PM Mary Martha Growth Group  
 1:30 PM Dorcas Circle Bible Study  
 1:30 PM Women's Ministry Team  
 4:30 PM Praise Band Rehearsal

**27**

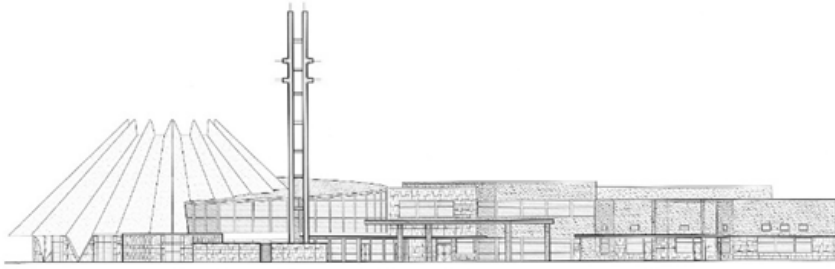
9:30 AM Staff Meeting  
 6:30 PM Cub Scouts  
 6:30 PM Facilities Building Committee  
 7:00 PM Boy Scouts

## October 2015

Wed	Thu	Fri	Sat
	<b>1</b> 9:00 AM Pastor Dave's Bible Study 6:30 PM Faith Community Health Team 7:00 PM Outreach Team	<b>2</b> 9:00 AM Bulletin Assembly 9:00 AM GNMM Craft Group 6:00 PM AA	<b>3</b> 4:30 PM Mafraq/EEMN Prayer Team 5:00 PM Worship
<b>7</b> 9:00 AM Sewing Bee 1:00 PM Pastor Corey's Bible Study 2:30 PM Knitting Group 5:30 PM Children's Choir 6:00 PM Family Dinner 6:30 PM Super Kids!, Wild! 6:30 PM Confirmation Parents Pre-Retreat Study 6:30 PM Small Group Bible Study 6:45 PM Chancel Choir	<b>8</b> 9:00 AM Pastor Dave's Bible Study	<b>9</b> 9:00 AM Bulletin Assembly 9:00 AM GNMM Craft Group 5:00 PM Confirmation Retreat 6:00 PM AA	<b>10</b> 4:30 PM Mafraq/EEMN Prayer Team 5:00 PM Worship
<b>14</b> 9:00 AM Sewing Bee 1:00 PM Pastor Corey's Bible Study 2:30 PM Knitting Group 5:30 PM Children's Choir 6:00 PM Family Dinner 6:30 PM Super Kids!, Wild! 6:30 PM RLC Foundation 6:30 PM Small Group Bible Study 6:45 PM Chancel Choir	<b>15</b> 9:00 AM Pastor Dave's Bible Study 1:00 PM Piece Makers	<b>16</b> 9:00 AM Bulletin Assembly 9:00 AM GNMM Craft Group 6:00 PM AA	<b>17</b> 7:00 AM Men's Breakfast 4:30 PM Mafraq/EEMN Prayer Team 5:00 PM Worship
<b>21</b> 9:00 AM Sewing Bee 1:00 PM Pastor Corey's Bible Study 2:30 PM Knitting Group 5:30 PM Children's Choir 6:00 PM Family Dinner 6:30 PM Super Kids!, Wild! 6:30 PM Small Group Bible Study 6:45 PM Chancel Choir	<b>22</b> 9:00 AM Pastor Dave's Bible Study	<b>23</b> 9:00 AM Bulletin Assembly 9:00 AM GNMM Craft Group 9:30 AM Hannah Circle Bible Study 6:00 PM AA	<b>24</b> 4:30 PM Mafraq/EEMN Prayer Team 5:00 PM Worship
<b>28</b> 9:00 AM Sewing Bee 1:00 PM Pastor Corey's Bible Study 2:30 PM Knitting Group 5:30 PM Children's Choir 6:00 PM Confirmation Rehearsal 6:00 PM Family Dinner 6:30 PM Super Kids!, Wild! 6:30 PM Small Group Bible Study 6:45 PM Chancel Choir	<b>29</b> 9:00 AM Pastor Dave's Bible Study	<b>30</b> 9:00 AM Bulletin Assembly 9:00 AM GNMM Craft Group 9:00 AM Preview Assembly 6:00 PM AA	<b>31</b> 4:30 PM Mafraq/EEMN Prayer Team 5:00 PM Worship



# We Have a Direction for Our Facilities!



At an August 30 Special Congregation Meeting, a quorum of confirmed members determined that the RLC Facilities Strategic Plan will be based on a **Rebuild Design Concept**. Of the 113 eligible voters present, 87 voted in favor of the Rebuild Design Concept as the basis for the Facilities Strategic Plan; while 26 voted for the Remodel Design Concept.



August 30 Special Congregation Meeting

Objective 6 of the RLC Long Range Plan (*Our Guide for Today, Our Vision for Tomorrow*) calls for developing a Facilities Strategic Plan to ensure our facilities support our ministries and keep them effective in the future. The RLC Architect Selection Committee unanimously chose Meier Architecture and Engineering to develop the Facilities Strategic Plan. The RLC Council secured Meier’s services in May 2014. Meier will submit the Strategic Plan to RLC in the near future.

To prepare for the August 30 vote, RLC members studied materials placed in the Prince of Peace or read electronic versions of the same information on the RLC Web Site. More than 100 members attended either the Sunday morning workshop series in July or the Wednesday evening workshop series in August. Workshop presentations were placed on the RLC Web Site for those who couldn’t attend.



Wednesday Evening Workshops in August



*“We build not for ourselves, but for those who are yet unreached by the Gospel of Jesus Christ.” (Pastor Reitan, 1962)*



## Sunday Morning Workshops in July

Discussion at the August 30 Special Congregation Meeting was lively. Expressions were heartfelt and varied – from apprehension to confidence and faith in the road ahead.

In his closing remarks, Pastor Steve thanked Facilities Building Committee members for their hard work preparing the congregation for the August 30 vote. He praised the congregation for the respect they showed one another throughout the discernment period, including the healthy discussion exhibited at the Special Congregation Meeting.

For perspective, Pastor Steve suggested that our congregation reread Nehemiah – an account of Nehemiah’s commitment and struggle to rebuild the walls and gates of Jerusalem; a story of the dedication of the people and their obedience to God’s laws.

The Facilities Building Committee would like to thank everyone who has been **engaged** in the facility upgrade process, thus far. **These are** exciting times! **We are** becoming even better fishers of men intent on making the Gospel of Jesus Christ known to others. Can you feel it?!

The Facilities Building Committee would like you to know that we value **all** comments and questions received. In that light, the Committee is working on a ‘companion document’ that will be delivered to the congregation along with the Facilities Strategic Plan. The companion document will address the things we have heard from you over the last several months. Together, the two documents will provide a complete and thorough package about **why we should** and **how we could** upgrade our facilities.

In Christ’s love, the Facilities Building Committee – Russ Warren, Karin Nickola, Dave Larkin, Jon Erlandson, Steve Moritz, Eric Schmieman, and Tom Pitkin

*“Never have we had such an opportunity to share the Gospel of Jesus Christ with others.” (Pastor Ernst, 2015)*



## Activities for Kids



### **SUPER KIDS OCTOBER 2015**

Oct. 7 - Let's Discover What God Gives Us!

Oct. 14 - Be Thankful for God's Patience

Oct. 21 - Special Guest!

Oct. 28 - Put God First!

Admiral Awesome is excited to kick off another season of learning how to live a life empowered by Christ! This fall, he will spend some time exploring the Bible truths of the Old Testament and how it points us to our need for the Savior—Jesus Christ!

Super Kids! is a Wednesday night ministry for children in 1st through 5th grade. Friends are always welcome to join us, and newcomers can jump in at any time! We meet from 6:30 to 7:45 PM, immediately following the family dinner at 6:00, in the Prince of Peace fellowship area. Worship and prayer, Bible lessons, scripture memorization, games, crafts, journaling and lots of fun happen each week!

For more information, please contact Jenny Page (jenny.page@richlandlutheran.org).

### **October's Operation Christmas Child Items of the Month:**

#### **Gum, Life Saver Rolls and \$7 Shipping Fee per box**

**This month, we're looking for packaged gum and rolls of Life Savers, and monetary donations to cover the shipping fee of \$7 per box.** Gum and Life Savers may be placed in the Christmas-y box near the mailboxes in the Prince of Peace fellowship area.

**Please NO liquids, toy weapons or war-related toys (i.e. army men, etc.)  
Please — no used items!**

We also need \$7 per box to cover shipping expenses. We estimate that we will have up to 500 boxes! If you can help cover a portion of the \$3500 needed to send these boxes around the world, please make your check payable to "RLC" with "**Operation Christmas Child**" noted on the memo line. Thank you for your help in making this a year-round ministry!

For more information contact Jenny Page (jenny.page@richlandlutheran.org)



## Youth Activities



All middle school students are encouraged to attend this mid-week ministry.

Each week, we spend time together having fun and learning God's Word. WILD! plays a vital role in RLC's youth ministry by partnering with the middle school Sunday School class and confirmation retreats to help kids grow their relationships with each other, and more importantly, with Jesus Christ.

**Oct. 7 - Was Jesus a wacko?**

**Oct. 14 - Did Jesus sin?**

**Oct. 21 - Was Jesus all that (and a bag of chips)?**

**Oct. 28 - What if I don't fit in?**

Wednesdays, 6:30-8:00 PM  
(immediately following the family dinner at 6:00)

Meet in the Gloria Dei room

Friends are always welcome to attend!

For more information, contact Ellie Page  
(554-8826)



### 6:30 PM in the High School Room

Coffeehouse is our weekly gathering for high school students. We spend time worshipping, playing, laughing, discussing, learning, praying...among other things! Friends are always welcome! Join us each Sunday as we grow together in our relationship with each other, and more importantly, with Jesus.

### SPECIAL NIGHT!!

**Oct. 18 - Confirmation Banquet** - please come at 5:30 to help serve dinner to the confirmands and their families (and you'll even get to eat, too!)

### High School Discipleship Team resumes October 4!

We meet at 5:30 pm on Sunday nights. If you are interested in learning more about being a Christian leader, and want opportunities to disciple others through various activities and events, please join us!

## Important Confirmation Dates

# COMING SOON

**October 9-11** — Middle School Confirmation Retreat (Bar M Ranch) RSVP before Sept. 30.

**October 18, 6:00 PM** — Confirmation Banquet for 9th grade confirmands & their families. RSVP by Oct. 14.

**October 28, 6:00 PM** — Confirmation rehearsal for 9th grade confirmands. Meet in the sanctuary.

**November 1, 10:00 AM** — Confirmation Day at 11:00 worship. Meet at 10:00 AM.

## Recognizing Our Volunteers



**It takes many hands to make things happen at RLC,  
and we appreciate all of our volunteers!**

On Sunday mornings right before the sermon starts at both services, the children are invited to go to Children's Church. They attend a special, kid-friendly worship service in the Children's Chapel, located in the preschool classroom wing. They sing, hear a Bible lesson, and pray together. We are very thankful for all of our Children's Church leaders and helpers who volunteer to lead the children's worship time.

So please say a special thank you when you see these folks at RLC: Jim and Lori Lachut, Desiree Hall, John Huebner, Kjerstyn Jordheim, Karen Juergens, Melissa Schmid, Michelle and Andy Clary, Pam Hedges, Kira Westlund, Julie Bishop, Trina and Andrew Miles, Jana Strasburg, Ellie Page, and Kiane Lesser

## GNMM Annual Meeting

The **Good News Media Ministry** will hold their annual meeting between services on Sunday, October 25, 2015.

Please plan to be there to hear about what's happening and what's being planned for GNMM!

## Women's Book Club

The Women's Book Club is beginning another year. Please join us for us for one, several, or all the books. We meet the third Thursday of the month (except for Lent when we meet on that Friday).

Our first three books are:

October: "The Invention of Wings" by Sue Monk Kidd

November: "The All-Girl Filling Station's Last Reunion" by Fannie Flagg

January: "The Cost of Discipleship" by Dietrich Bonhoffer

Our October meeting will be Thursday, October 15, at Norene Erlandson's home, 322 Seattle in Richland.

Contact: [joanne.woehle@richlandlutheran.org](mailto:joanne.woehle@richlandlutheran.org) or 943-3164.





# Worship Support

	<i>Time</i>	<i>Sunday October 4</i>	<i>Sunday October 11</i>	<i>Sunday October 18</i>	<i>Sunday October 25</i>
<i>Lectors</i>	8:30 AM	Peggy Pilger	Kathy Killand	Peggy Pilger	Dolores Jaech
	11:00 AM	Karen Clark	Susan Schmieman	Ellie Page	Jeff Dagle
<i>Acolytes</i>	8:30 AM	Adam Pilger Madeline Pilger	Kyle Prigge Ella Sperline	Mason Ciolli Kjerstyn Jordheim	Aiden Lesser Garrett Streufert
	11:00 AM	Carlyle Keyes Jennifer Williams	Nathan Mitchell Trond Tilton	Spencer Hoffner Conner Budzeck	Trey Wiegand Jantz Levin
<i>Ushers</i>	8:30 AM	H-Gary Weible Jim Peterson A-Larry Corning Dave Larkin	H-Jim Peterson Larry Corning A-Bruce Lander Fred Kremmer	H-Chuck McCargar Sue McCargar A-Mac Dixson Larry Haler	H-Mike Schwartz Karen Schwartz A-Bruce Lander Fred Kremmer
	11:00 AM	H-Carol Hexum Charles Rogers A-Alan Hagensen Mike Strasburg	H-Kathy Snyder Rick Snyder A- ***** *****	H-Alan Hagensen Carol Hexum A-Mike Strasburg Charles Rogers	H-Kathy Snyder Rick Snyder A-Mike Bettinson Valerie Bettinson
<i>Communion Assistants</i>	8:30 AM	Sue Meek Warner Blyckert Charles Davis	Clarine Watkins Sara Gillette Norm Gillette Charles Davis	Charles Davis Elaine Davis *****	Clarine Watkins Elaine Davis Charles Davis
	11:00 AM	Karen Clark Kelly Westlund *****	Ginnette Ernst Val Silva Heidi Dagle *****	Jon Page Jenny Page Val Silva	Bill Peterson Sue Peterson Kelly Westlund
<i>Setup/Cleanup Communion</i>	Saturday 5:00 PM	Jim Worgull Sue Worgull	Bernie Woehle Joanne Woehle	Ann Brandes Dave Brandes	Nancy Ballard
<i>Cleanup/ Setup Communion</i>	Sunday After 8:30 AM	Lois Harrold Karin Nickola	Carol Schmid	Dan Jordheim Vicki Jordheim	Pamela Warren Joy Stuenkel
<i>Clean Up Communion</i>	After 11:00 AM	Rick Nunamaker Susie Nunamaker	Jim Loss Jean Loss	Mike Schroeder MaryJo Schroeder	Kelly Westlund
<i>Church Friends</i>	8:30 AM	Lois Harrold	Jim Worgull Sue Worgull	Carol Schmid	Debbie Honeyman
	11:00 AM	Kelly Westlund	*****	LaVonne Scully	Kelly Westlund
<i>Children's Church Leaders</i>	8:30 AM	Lori Lachut Jim Lachut	*****	*****	Melissa Schmid
	11:00 AM	Trina Miles	Julie Bishop	Jana Strasburg	Pam Hedges
<i>Producer/ Audio Mix</i>	8:30 AM	Larry Haler	Andrew Clark	Bob Thompson	Andrew Clark (11:00)
<i>Tech Direc- tor/Live Stream Coordinator</i>	8:30 AM	Brian Killand	Mike Schwartz	Brian Killand	Jim Moran (11:00)

## Worship Support, Continued

	<i>Time</i>	<i>Sunday October 4</i>	<i>Sunday October 11</i>	<i>Sunday October 18</i>	<i>Sunday October 25</i>
<i>Cameras</i>	8:30 AM	#1-Ryan Warren #2-Fred Kremmer	#1-Ken Meek #2-Don Schmid	#1-Robert Warren #2-Daniel Miles	#1-Jack Page (11:00) #2-Woody Page
<i>Editor/ Post Production</i>	8:30 AM	Karen Rogers	Mike Bettinson	Bob Thompson	Karen Rogers
<i>Sound System Operators</i>	8:30 AM	Larry Corning	Paul Hedges	Paul Hedges	Larry Corning
	11:00 AM	Jeff Dagle	Tammy Carswell	Jeff Dagle	Tammy Carswell
<i>Coffee Preparation and Cleanup</i>	8:30 AM	*****	*****	*****	*****
	11:00 AM	*****	*****	*****	*****
<i>Offering Custodians</i>	Sat. 5:00	*****	Rob Barr	*****	*****
	8:30 AM	M/K Schwartz G/E Weible	Larry Harrold Jim Peterson	Fred Kremmer Lois Harrold	Jon Erlandson G/E Weible
	11:00 AM	Rich Barchet Alan Hagensen	Rick Budzeck M/V Bettinson	Jana Strasburg Rick Budzeck	Rick Snyder M/V Bettinson
<i>Sat. Evening Worship Support</i>	5:00 PM	Kelly Arnzen Marcia Vogel	Jim Lachut Lori Lachut	Ann Brandes Dave Brandes	Jim Perham Lisa Frislie
<i>Cashiers</i>		Nancy Ballard Doris Barchet	Debbie Honeyman	Kathy Snyder Lori Hogan	Nancy Ballard Janet Budzeck
<i>Recycle</i>		Carol Schmid	Fred Kremmer	LaVonne Scully	Jeff & Heidi Dagle
<i>Flowers</i>		Jeff & Peggy Pilger	Henry & Lil Solbrack		

Please check over the schedule carefully. If you cannot serve when you are scheduled, please trade with someone or find a substitute for yourself and let the church office know.

\*\*\*\* indicates an available service opportunity. If you can fill in, please let the church office know.

***Serve wholeheartedly, as if you were serving the  
Lord, not people***

***Ephesians 6:7***

# Anniversaries & Birthdays

## ANNIVERSARIES

**October 1**  
Melissa & Don Schmid

**October 3**  
Rebecca & Steven  
Skinner

**October 4**  
Karin & John Cagle  
Judy & Ed Simonen

**October 5**  
Allison & Seth  
Thompson

**October 7**  
John Drewrey & Jen  
Ranta  
Kris & Cameron Mitchell  
Sue & Bill Peterson

**October 8**  
Debbie & Steve Moritz

**October 12**  
Judy & Carl Schroeder

**October 14**  
Joan & Peter Mattich  
Lillian & Henry Solbrack

**October 17**  
Leslie & Steve Richardson

**October 18**  
Kimberly & Jeff Ziemer

**October 21**  
Michelle & Loren Peterson

**October 24**  
Mary & Andrew Lipton  
Sue & Jim Worgull

**October 25**  
Jeri & Tom Frislie  
Bettye & John Samuel

**October 27**  
Sue & Allen Vernon

## BIRTHDAYS

**October 1**  
Kendall Conrad  
Karen Juergens  
Thomas Miller  
Christina Schulz

**October 2**  
Myrtle Nesbitt

**October 3**  
Kathy Baumgarten  
Justin Destito  
Dean Oberlander

**October 4**  
Sally Giller  
Lila Hagensen  
Paige Ingram

**October 5**  
Darrell Miles  
Glenn Thesenvitz

**October 6**  
Bruce Chaney  
Grace Davis  
Trenton Duchscherer  
Soren Miles  
Boone Myers  
Jorden Smith

**October 7**  
Mike Stankovich  
Andrew Villegas  
Milutin Vukojevic

**October 8**  
Eunice Weible

**October 9**  
Jared Goplen  
Judy Schroeder

**October 10**  
David Juergens  
Michael Schroeder  
Clay Underwood

**October 11**  
Mary LaMarche

**October 12**  
Corrine Armstrong  
James Hardman  
Carmen Whelan

**October 13**  
Aiden Pardini  
Cayden Tanasse

**October 14**  
Erik Bratvold, II  
Leonard Lust  
Bea Skinner  
Bill Venema  
Sharon Wunschel

**October 15**  
Shayla Carter  
Dennis Larsen  
Corki Mraz  
Alma Utecht  
Mark Williams

**October 16**  
Chuck Fordham  
John Fulton

**October 17**  
Terry Davis  
Linda Totten

**October 18**  
Alexis Foss  
Jaida Wiley

**October 19**  
Kiley Johnson  
Barbara King  
Jon Putz

**October 20**  
Hans Miles  
Katherine Pardini  
Lorrie Rogers

**October 21**  
Elaine Boday  
Ana Montoya  
Rich Olenius

**October 22**  
Freja Elrod  
Hannah Mitchell

**October 24**  
Virgina Glasford  
Thomas Pitkin  
Blake Vopalensky  
Joey Weissenfels

**October 26**  
Johnny Boynton  
Jeff Sperline  
Ann Tolrud  
Clarine Watkins

**October 27**  
Corrine Corbin  
Kelly Duchscherer

**October 28**  
Carmie Peterson

**October 29**  
Judy Eller  
Rose Moran  
Woody Page  
Gerald Sandness  
Elaine Solbrack

**October 30**  
Jim Loss  
Elijah Rodriguez  
Ollie Stolte

**October 31**  
Lisa Corning  
Jeff Gano  
Elizabeth Kelly  
Debbie Maier





**Richland Lutheran Church, LCMC**  
901 Van Giesen  
Richland, WA 99354

MONTHLY PUBLICATION

**RETURN SERVICE REQUESTED**



**Worship Schedule**

**Traditional Worship with Holy Communion**  
Sundays at 8:30 AM

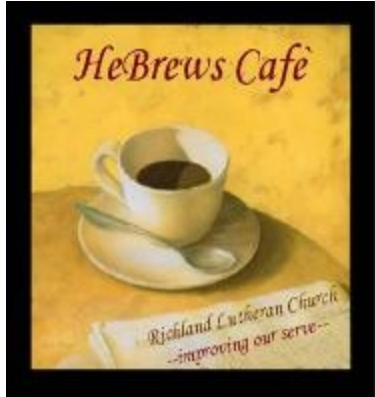
**Worship with Holy Communion**  
Sundays at 11:00 AM

**Worship with Holy Communion**  
Saturdays at 5:00 PM

*And when circumstances beyond your control prevent  
you from coming to church . . .*

**Good News Today**  
Aired Sunday mornings on  
KVEW 42 and KAPP 35 at 9:00 AM  
or look on YouTube under Richland Lutheran Church

**Audio files of sermons are available on the website:  
[www.richland-lutheran.org](http://www.richland-lutheran.org)**



***Come to HeBrews Café Sunday mornings,  
between 9:45 AM and 10:45 AM***

***It's where Richland Lutheran Church members are re-  
freshed, rejuvenated, and renewed for work in the  
Kingdom!***

***There are still some Sundays available for serving.  
Sign up on the bulletin board in the narthex.***

***Equipping. Empowering. Encouraging.***

***We are a congregation of Christ followers who are making Jesus Christ known to all people and advancing His Kingdom.***