



Women's Ministry Event



inspiring stories from three remarkable women who literally and figuratively run the race with their eyes fixed on Jesus everyday

Dishdash in the Desert



Aileen Coleman
Founder of the Annoor Sanitorium and beloved "Desert Rat"



Trish Hughett
Teacher in Kenya and Jordan



Julie Penley
RLC Member
Teacher in Africa & Jordan

**Brunch—Fellowship
Worship—Inspiration**

Richland Lutheran Church
901 Van Giesen, Richland, WA
Saturday, August 2, 2014
8:30 AM—2:00 PM

\$10 per person
tickets available July 12-July 27
following all worship services

Call 943-3164 by noon Monday, July 28, 2014 to register.
This event is sponsored by the RLC Women's Ministry.

Congregation Council

Council Members

Ben Barr, Member at Large
Norm Gillette, Member at Large
Sarah Hagensen, Member at Large
Dave Larkin, President
Rich Olsen, Financial Officer
Don Schmid, Member at Large
Joel Sorensen, Secretary
Sandy Steele, Vice President
Mike Strasburg, Member at Large

Ex Officio Member

Pastor Steve Ernst, Lead Pastor

Minutes of Council meetings are available on the website and in the church library.

Staff

Rev. Steve Ernst, Lead Pastor

Outreach Ministry Leader
pastor.steve@richlandlutheran.org

Rev. Corey Smith, Associate Pastor

Christian Service Ministry Lead
pastor.corey@richlandlutheran.org

Rev. Dave Hogan, Associate Pastor

pastor.dave@richlandlutheran.org

Joseph Farrar, Director of Music and Worship

Worship Ministry Lead
joseph.farrar@richlandlutheran.org

Debbie Stankovich, CCA, Director of Administration

Biblical Stewardship Ministry Lead
debbie.stankovich@richlandlutheran.org

Open, Property and Grounds Coordinator

Kelly Westlund, Ministry Assistant for Christian Service

kelly.westlund@richlandlutheran.org

Joanne Woehle, Ministry Assistant for Worship

joanne.woehle@richlandlutheran.org

Lisa Wiegand, Ministry Assistant for Biblical Stewardship

lisa.wiegand@richlandlutheran.org

Jenny Page, Ministry Assistant for Spiritual Transformation

jenny.page@richlandlutheran.org

Member Directory Changes

Miller, Inez
1001 River Lakes Parkway
Apt. 206
Whitefish, MT 59937

*New member received
June 8:*

Distefano, Connie
4405 Desert Pl.
Pasco 99301
543-9450

Scripture taken from the HOLY BIBLE, NEW INTERNATIONAL VERSION[®] NIV[®]. Copyright © 1973, 1978, 1984, 2011 by Biblica, Inc.[™] Used by permission of Biblica, Inc.[™] All rights reserved worldwide.

Pastoral Acts

Baptisms

None

Weddings

None

Memorial/Funeral

June 28 - Roy Hibbard

The Preview

is published monthly by Richland Lutheran Church for members and friends of the congregation. *The Preview* is distributed free of charge. Please report address changes to 901 Van Giesen, Richland, WA 99354, call 509-943-3164, fax 509-943-5383, or e-mail office@richlandlutheran.org. Richland Lutheran Church grants permission for any original content (not a reprint) to be photocopied for noncommercial, local church, or personal use, provided the copies indicate the source is *The Preview*. For any other usage, advance permission must be obtained. Electronic versions of *The Preview* may be forwarded in their entirety for noncommercial, local church, or personal use as well.

From Pastor Steve

2014 Ministry Plan and Guide and Vision Update

As you read this article we are already half-way through 2014. It's difficult to believe, isn't it? Where does the time go? As we look back on the first six months of the year and forward to the next six months I'd like to give you an update on both our 2014 ministry plan and the guide and vision (Long Range Plan) both accepted and approved by the congregation last fall.

The annual ministry plan guides and directs the congregation in its ministry and mission for the year by providing a yearly focus and general direction, staffing and volunteer plan, ministry goals and objectives, and ministry funding. You may recall, the 2014 ministry plan focus is "Becoming and Living as a Royal Priesthood." What this means is, God has called and ordained Richland Lutheran Church to make Christ's name known and advance His Kingdom here in Richland, the Tri-Cities, and beyond. In order to effectively and efficiently fulfill this call every person at Richland Lutheran must be involved in ministry and mission. Without every person's help we will fall short of God's intended plan for us.

To become and live as a royal priesthood the congregation decided to work on four areas of strengthening for 2014 and beyond. We agreed to work on bettering and becoming a congregation that is: gifts based, missional, equipping, and partnering. A "gifts based" congregation focuses on helping every Christian find and use their spiritual gift in the area of ministry they are gifted. A "missional" congregation is one which is actively entering and engaging the community, both corporately and individually. An "equipping" congregation seeks to equip, empower, and encourage all people to serve in ministry and mission. A "partnership" congregation focuses on partnering in work and service to the Gospel of Jesus Christ.

The Guide and Vision provides six core objectives we've adopted to accomplish as we move into the future. They are; *Provide Opportunities for Spiritual Transformation, Develop Christ-Centered Leaders, Focus on a Major Mission, Worship God with Praise and Thanks, Expand Evangelism Efforts, Use Our Resources to Advance God's Kingdom.*

Though there are many ways, too many to list here, where we've been successful in accomplishing both the annual ministry plan and the guide and vision this first six months, I'd like to share with you perhaps the most important piece, The Richland Lutheran Ministry Matrix (Ministry Matrix). The Ministry Matrix is a document that the staff and council have worked up to better organize and structure our ministry to accomplish our goals and objectives. You'll find it on page 7.

Allow me to give you a quick summary of what you're looking at. Thanks for your patience and understanding knowing this is very difficult to do by written word. I'll do my best. We've divided our ministry into to four areas; Worship, Spiritual Transformation, Biblical Stewardship, and Christian Service. This part was approved by the congregation at our annual meeting last October. These four areas comprise the heart of our ministry and mission. Each area (represented by a different color box) has a leadership team (listed to the side of the box) who is responsible for equipping, empowering, and encouraging the congregation to accomplish the work of the ministry. Each leadership team includes a ministry lead, ministry assistant, two Congregation Council members and other ministry specialists if necessary and approved by the congregation. Each area also has various ministry teams, team leaders, sub-teams, and team members to accomplish ministry and mission.

I'm excited about the Ministry Matrix and look forward to talking to you more about it and how it will serve our congregation. In the next few months you'll be hearing more about this tool and how we'll use it to move into the future. For now, please keep our congregation in prayer as we do our best to be faithful and obedient to the work of Christ Jesus here at Richland Lutheran.

See the Ministry Matrix on Page 7



Financial Update

	YTD - May			Prior Year Comparison		
	Actuals	Budget	Var (O)/U	2014	2013	Var (O)/U
Offerings / Income	\$ 329,280	\$309,647	\$19,663	\$ 309,647	\$ 305,891	\$ 3,756
Expenses	\$ 358,899	\$335,920	\$22,979	\$ 335,920	\$ 346,042	\$(10,122)
Net Cash Flow	\$(29,619)	\$(26,274)	\$(3,345)	\$(26,274)	\$(40,151)	\$ 13,878

Cornerstone Capital Fund Update through May:

Total Deposits:	\$37,567.20
Total Withdrawals:	\$ <u>0</u>
Ending Balance (May):	\$ 37,567.20
Previous Balance:	\$ 37,447.20
Change:	\$ 120.00

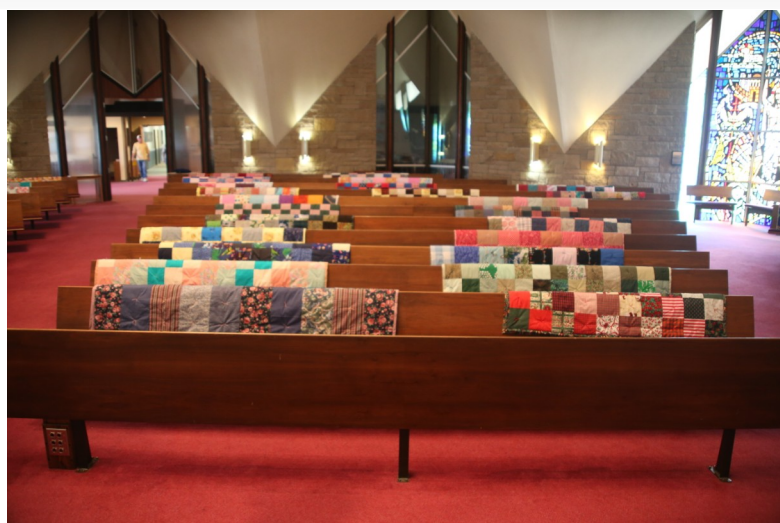
The information is only a snapshot of the church's financial status on the day the report was generated and is not audited information. Please direct all inquiries for additional information to Debbie Stankovich, Church Administrator at 943-3164 or debbie.stankovich@richlandlutheran.org.

RLC Sewing Bee

The RLC Sewing Bee wants to thank the Benton-Franklin WA Chapter of Thrivent Financial for Lutherans for their generous check of \$400 to help support our ministry of sewing quilts and lap robes for the needy. They have been a real blessing to us.

We need more cotton and cotton blend fabrics that can be cut into blocks for our quilts.

Thank you RLC members for your support.
Lois Harrold (946-0923)



President's Perspectives - Our Staff

The Apostle Paul wrote, “*For we are God’s handiwork, created in Christ Jesus to do good works, which God prepared in advance for us to do.*” (Ephesians 2:10). That is why we are here on earth - to do good works. But we don’t always have the knowledge, confidence or developed skills to do the good works awaiting us. So God has even provided help with that: “*So Christ himself gave the apostles, the prophets, the evangelists, the pastors and teachers, to equip his people for works of service, so that the body of Christ may be built up.*” (Ephesians 4:11-12). Our staff takes its job to equip us for good works seriously while doing their own share of good works.

Our wonderful staff has made my position easier and more joyful for which I am personally grateful. Each of you should also be grateful for the dedication they show to ministry here at Richland Lutheran Church and for the way they work together and with the Council. I have been attending the Tuesday morning staff meetings on a regular basis for the past eight months and have gotten to know each of the staff much better because of it. They spend over two hours each Tuesday meditating on the Bible, reviewing the events for the upcoming week, coordinating ministry plans, and celebrating birthdays. For a staff of only ten they seem to have an astonishing number of birthdays each year making me suspect there may be some accelerated aging going on for some of them.

Attendees of our services see our staff members who are “up front” but there are several others who are working in the background to make things happen. Our staff consists of:

- **Pastor Steve Ernst** – our Lead Pastor, preacher, teacher, and equipper for Christian Service.
- **Kelly Westlund** – our Ministry Assistant for Christian Service.
- **Pastor Dave Hogan** – our preacher, teacher and equipper for our Visitation ministry.
- **Pastor Corey Smith** – our preacher, teacher, and equipper for Spiritual Transformation.
- **Jenny Page** – our Ministry Assistant for Spiritual Transformation.
- **Joseph Farrar** – our new Director of Worship and Music and equipper for Worship ministries.
- **Joanne Woehle** – our Ministry Assistant for Worship.
- **Debbie Stankovich** - our Director of Administration and equipper for Biblical Stewardship.
- **Vacant** – our Property and Grounds Coordinator.
- **Lisa Wiegand** – our Bookkeeper and Ministry Assistant for Biblical Stewardship.

If you haven’t gotten to know our staff please seek to meet them and get to know them better. And always take the opportunity to thank them for their dedication and hard work in equipping us for doing good works. They need the encouragement and confirmation that they are appreciated.

I regret that **Jay Dixon** has resigned to take another job. His family needed the extra salary and benefits provided by a secular job so we understand his decision. But we will all miss his joyfulness in serving God here in our church. He helped Carol and I out so much during last year’s Renovare Conference. Jay, we wish you well in your new job and pray that it brings with it the opportunity to do good works for God.

Dave Larkin – Congregation President

From Our Council

Equip

“What are your spiritual gifts?” Are you pausing for reflection and hoping the question goes away? I did too. This was one of the hardest questions on the search committee’s list. I took the somewhat Lutheran approach and told them what I had experienced and hoped that they would tell me what I had. Are you in the same boat? I took the tried and true way out and thought perhaps the gifts are wrapped up somehow in talents and skillsets, and let it pass again. In the last month, though, the council has needed to form a building team and in looking at the Long Range Plan we are given the task of forming teams around spiritual gifts. The same questions came back to me: “What are the spiritual gifts?”, “Why are they important?”, and “What are the practical implications of knowing and recognizing your gifts and others on a functioning team?” The scriptural passage that is used in the Long Range Plan to identify them is Ephesians 4:7,11-13. It lists apostles, prophets, evangelists, pastors, and teachers. When you read that do you have the sinking realization that that is not you? I did too. But wait! There’s more! (I like NPR) There are additional passages in the Bible talking about other spiritual gifts such as mercy and service. Find them. When you know what you have, not only will it help you with understanding your own walk, but it can also show you the area where your tunnel vision occurs. That tunnel vision, centered around your gift, can create problems within a group when the blindspots are not taken into account. Conflicts will occur where blindspots collide. By learning more about the other gifts and where their blindspots can occur (the associated tendencies and priorities) you can potentially see a collision before it happens and hopefully avoid it. Pride and judgement are the stumbling blocks of any gift. 1 Peter 4:10 “Each one should use whatever gift he has received to serve others, faithfully administering God’s grace in its various forms.” You are equipped.

Empower

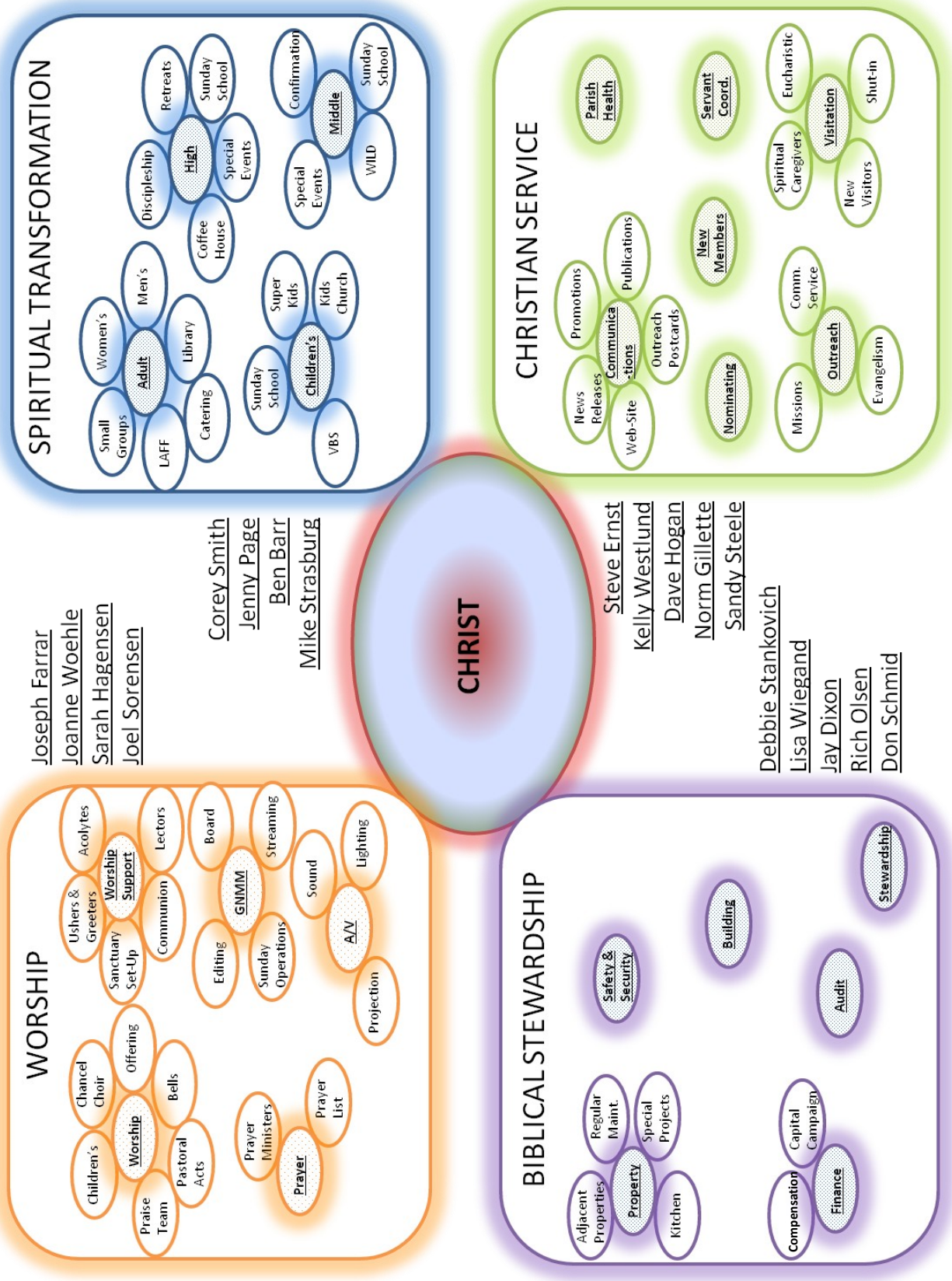
Have you ever wondered why Jesus had twelve disciples? It seems like it should be something very scriptural like “representing the twelve tribes of Israel” or something. The reason is perhaps even more relevant 2000 years later amidst all of our technological distractions. They were called “The Twelve” simply because when he called them these were the ones who answered, and only 12 showed up. They lacked the gifts of the Holy Spirit and in terms of talent they had the combined skillsets to build a fish and chips stand. What they did have was availability. Are you available? With their willingness to simply say “I will follow” the world was changed forever. Imagine how much more he can do with you. With a man’s perspective “time, family, and work” are the three hitches in a swing that will strike him out more often than he’ll admit: but, if you were to make yourself available and communicate “I want to be available, this is where I’m struggling, show me where you need me to be...” you would see your life and priorities suddenly shift to a different axis. Empower: who can empower? To be filled you must be empty first.

Encourage

You are equipped, and your ability to be empowered by the Holy Spirit is limited only by your willingness. The only question that remains is what can the rest of us do to support you in your ministry?

Mike Strasburg, Member At Large

Ministry Matrix



VBS: Wilderness

Escape in Photos



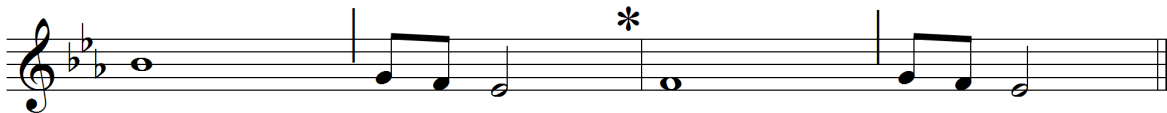
From Joseph, Director of Music and Worship

Thank you all for such a warm welcome here at Richland Lutheran Church. I have served among several congregations during my career from different regions and cultures, but I have never known hospitality such as has been shown by the people here. Again, thank you and I am enjoying everything about the Tri-Cities. Feel free to check with this southern boy again in January when winter arrives!

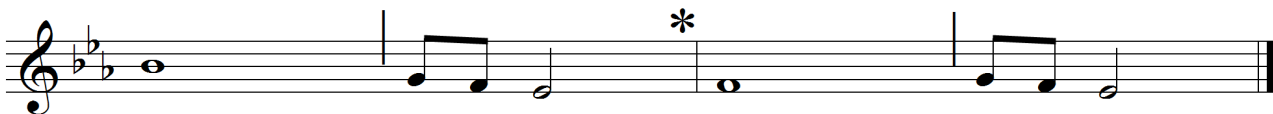
You'll notice that we have added a few new practices to the 8:30 traditional service. The sopranos of the choir often send a descant ringing through our worship space on the last verse of the first hymn. A descant is a countermelody, sung by the higher voices. It really brings a sense of majesty and celebration to start our worship experience every week. Additionally, we have begun singing a psalm between our first and second scripture readings. This is a great opportunity to connect with the very oldest worship material in Judeo-Christian culture. The 150 canon psalms, written by many authors over a period of about 1000 years or the book of Psalms as we know it, were pretty much compiled shortly after the return of Israel from captivity in Babylon a little over 2500 years ago. They are used many ways by many different congregations, but they are most effective when presented the way they were meant to be, and that is sung! I've gotten the question: Are we, the congregation, supposed to sing the psalm with the choir? The answer is a resounding, "YES!". If you aren't sure about how to do it, keep reading. The psalms are printed in the bulletin like this:

Give thanks to the Lord, for the | Lord is good;* God's mercy en-| dures for ever.

The tune each pair of lines is sung to is called the "tone". The tone we are currently using goes like this:



The note with no stem (a whole note for those of you who read music) is called the "reciter". All the words up to the vertical line are sung on this note in a natural speech-like rhythm. The words after the vertical line are sung to the three notes after the reciter. The asterisk is to show you that the first line of the pair is over and then the second line of each pair is sung in the same way to the second half of the tone. So the line above would go like this:



Give thanks to the Lord, for the Lord is good; God's mercy en - dures for ever

We also carry on the centuries old Christian tradition of closing the singing of the psalm with the "Gloria Patri" (Glory to the Father and to the Son. . .)

Also, if you have ever wanted to sing in the choir, but weren't sure, I'd like to invite anyone who would like to come and give it a try on any Sunday morning during the summer. But you may say, "I haven't been to rehearsal on Wednesday. For the next six weeks, none of us will have been! The Choir is taking some well deserved Wednesday nights off during the summer, but is still dedicated to being a leading voice in the congregational singing. The anthems we are singing during this time are quite easy and we will have a quick rehearsal every Sunday before service at 8:00 am. So if you've never sung in choir but have always wanted to try it out, or if you have sung in our choir before but not in a long time, or in a choir somewhere else, we warmly welcome you to come and sing with us. You may even want to keep singing with us when rehearsals resume in the fall!

Here's Lookin' At You!

Previously, I have chronicled my deteriorating hearing. Per the headline above, *this* column will **not** be about any update(s) on that condition. I have several *other* physical infirmities getting more pronounced as I age. No, I'm *not* talking about my face! But it does have something to do with my looks. Specifically, the items in my head through which I look. Those subjected to having to look *at me* may be aware my eye contact is not good. I suffer from what ophthalmologists refer to as: damage to the 4th optic nerve. In lay terms: my right eye is askew, i.e., I'm "cockeyed" (insert joke.) An operation to correct this, at my age, would be cost-prohibitive. To compensate, I incline my head so my right eye is closer to the object of vision than my left, to adjust for lacking balanced imagery between my eyes. Effectively, you might say, I'm "cross-eyed" - but not horizontally. Rather, I tilt my head to adjust for the differing *verticality* of the object in my respective eyes. Were I a pinball machine, I'd reflect a sign saying "Tilt"! At my last checkup the ophthalmologist told me: "I can't understand why you're not insane trying to compensate for this!" How's that for bedside manner? You may be thinking his statement explains a lot you've been wondering about me.

Having just come through another Father's Day, I'm grateful my kids are old enough that I've gotten through the stages of the new (unneeded) necktie and collect phone calls. But, I'm reminded of their mockery of my physical changes over the years. One example: "Dad, your belt buckle is pointing down!" This was surely an indication of more tonnage being added to my "pulpit blister." So, I went out and purchased new dress slacks to accommodate my increasing girth. Trying to be an example of frugality, I purchased nice looking *cheap* slacks. This caused more howls of derision when the waistband of the cheap slacks would sort of flop over. What I wanted to know was: "how come it only flops over on the right side?" I may have become more *portly* in my old age but the waistband was flopping over on the *starboard* side.

Enough about *me*! The question for *us* today is this: do *you* ever feel your Christian life is *out of balance*? Do you get the sense that the *inclination* of your Christian vision is *tilted*? Would you conclude your Christian walk is *listing* in the waters of life? Have the matters of the Christian life to which you subscribed become increasingly *weighty* matters? If your Christianity were a belt buckle, is your life with Christ pointed straight ahead, or bent downward? Would the Lord, looking *at you*, conclude your relationship with Him has become *lop-sided* instead of centered? Rectify this by recognizing your Christ-walk has become about me/you instead of centering on Him. It's rejuvenating to focus upon Him until we become "Cross-eyed". The vision becomes clearer until "**we shall see Him as He is**" (1 John 3:2). "Open my eyes that I may see glimpses of truth Thou hast for me...Open my eyes, illumine me, Spirit divine!" (Hymn titled by opening phrase.)

Pastor Dave

July 2014

Sun	Mon	Tue
<p>The Richland Lutheran Church calendar changes daily!</p> <p>Please call the church office, 943-3164, or check the website, www.richlandlutheran.org, for the most current information. Please note that not all activities, especially Growth Group meetings and Circles, are actually held at the church.</p>		<p>1</p> <p>9:30 AM Staff Meeting 6:00 PM Praise Band 7:00 PM Outreach Team 7:00 PM Boy Scout Troop 248 7:30 PM Facilities Building Committee</p>
<p>6</p> <p>8:30 AM Worship 9:00 AM Good News Today 9:45 AM Education Hour/HeBrews Cafe 10:15 AM Worship 5:30 PM High School Discipleship Team 6:30 PM Coffeehouse 7:00 PM Haler/Worgull Growth Group</p>	<p>7</p> <p>8:00 AM GNMM Antique Sale Set Up 9:00 AM Play Date 12:00 PM Mary Martha Growth Group 7:00 PM Bible Study</p>	<p>8</p> <p>7:00 AM Men's Prayer Breakfast at Denny's 9:30 AM Staff Meeting 6:00 PM Praise Band 7:00 PM Boy Scout Troop 248 7:00 PM Congregation Council</p>
<p>13</p> <p>8:30 AM Worship 9:00 AM Good News Today 9:45 AM Blood Pressure Checks 9:45 AM Education Hour/HeBrews Cafe 10:15 AM Worship 5:30 PM High School Discipleship Team 6:30 PM Coffeehouse 7:00 PM Haler/Worgull Growth Group</p>	<p>14</p> <p>9:00 AM Play Date 12:00 PM Mary Martha Growth Group 7:00 PM Bible Study</p>	<p>15</p> <p>9:30 AM Staff Meeting 6:00 PM Praise Band 7:00 PM Boy Scout Troop 248</p>
<p>20</p> <p>8:30 AM Worship 9:00 AM Good News Today 8:00 AM Beach Trip 9:45 AM Education Hour/HeBrews Cafe 10:15 AM Worship 7:00 PM Haler/Worgull Growth Group</p>	<p>21</p> <p>Beach Trip 9:00 AM Play Date 12:00 PM Mary Martha Growth Group 7:00 PM Bible Study</p>	<p>22</p> <p>Beach Trip 9:30 AM Staff Meeting 6:00 PM Praise Band 7:00 PM Boy Scout Troop 248</p>
<p>27</p> <p>Beach Trip Returns 8:30 AM Worship 9:00 AM Good News Today 9:45 AM Blood Pressure Checks 9:45 AM Education Hour/HeBrews Cafe 10:15 AM Worship 7:00 PM Haler/Worgull Growth Group 7:00 PM Union Gospel Mission Service</p>	<p>28</p> <p>9:00 AM Play Date 12:00 PM Mary Martha Growth Group 7:00 PM Bible Study</p>	<p>29</p> <p>9:30 AM Staff Meeting 6:00 PM Praise Band 7:00 PM Boy Scout Troop 248</p>

July 2014

Wed	Thu	Fri	Sat
<p>2</p> <p>9:00 AM Sewing Bee 1:00 PM Pastor Corey's Bible Study 2:30 PM Knitting Group 6:45 PM Chancel Choir</p>	<p>3</p> <p>9:00 AM Pastor Dave's Bible Study 9:00 AM Library Work 9:30 AM Ministry Leads Meeting 12:00 PM Compensation/Benefits Team 12:00 PM High School Bible Study 6:00 PM Girl Scouts 6:00 PM Steele Growth Group</p>	<p>4</p> <p>Independence Day - Office Closed</p> <p>9:00 AM Bulletin Assembly 6:00 PM AA Meeting 6:30 PM Girl Scouts</p>	<p>5</p> <p>5:00 PM Worship</p>
<p>9</p> <p>8:00 AM GNMM Antique Sale Set Up 9:00 AM Sewing Bee 1:00 PM Pastor Corey's Bible Study 2:30 PM Knitting Group 6:30 PM AA Treatment Committee 7:00 PM RLC Foundation</p>	<p>10</p> <p>8:00 AM GNMM Antique Sale Set Up 9:00 AM Pastor Dave's Bible Study 9:00 AM Library Work 9:30 AM Ministry Leads Meeting 12:00 PM High School Bible Study 6:00 PM Girl Scouts 6:00 PM Steele Growth Group</p>	<p>11</p> <p>8:00 AM GNMM Antique Sale Set Up 9:00 AM Bulletin Assembly 6:00 PM AA Meeting</p>	<p>12</p> <p>8:00 AM GNMM Antique Sale 5:00 PM Worship</p>
<p>16</p> <p>9:00 AM Sewing Bee 1:00 PM Pastor Corey's Bible Study 2:30 PM Knitting Group 7:30 PM GNMM Board Meeting</p>	<p>17</p> <p>9:00 AM Pastor Dave's Bible Study 9:00 AM Library Work 9:30 AM Ministry Leads Meeting 12:00 PM High School Bible Study 1:00 PM Piece-makers 6:00 PM Girl Scouts 6:00 PM Steele Growth Group</p>	<p>18</p> <p>9:00 AM Bulletin Assembly 6:00 PM AA Meeting 6:30 PM Girl Scouts</p>	<p>19</p> <p>6:00 AM Men's Breakfast 5:00 PM Worship</p>
<p>23</p> <p>Beach Trip 9:00 AM Sewing Bee 1:00 PM Pastor Corey's Bible Study 2:30 PM Knitting Group</p>	<p>24</p> <p>Beach Trip 9:00 AM Pastor Dave's Bible Study 9:00 AM Library Work 9:30 AM Ministry Leads Meeting 12:00 PM High School Bible Study 6:00 PM Girl Scouts 6:00 PM Steele Growth Group</p>	<p>25</p> <p>Beach Trip 9:00 AM Bulletin Assembly 9:00 AM Preview Assembly 6:00 PM AA Meeting</p>	<p>26</p> <p>Beach Trip 5:00 PM Worship</p>
<p>30</p> <p>9:00 AM Sewing Bee 1:00 PM Pastor Corey's Bible Study 2:30 PM Knitting Group</p>	<p>31</p> <p>9:00 AM Pastor Dave's Bible Study 9:00 AM Library Work 9:30 AM Ministry Leads Meeting 12:00 PM High School Bible Study 6:00 PM Girl Scouts 6:00 PM Steele Growth Group</p>		

Activities for Kids

Thank you for your support of Wilderness Escape Vacation Bible School!



Over the course of the week, **124 children** experienced the fun and adventure of traveling with Moses and the Israelites. We crossed through the Red Sea, gathered quail and manna, defeated the Amalekites, remembered the Passover and how Jesus is the ultimate, final sacrifice, and received the Ten Commandments. Through it all, we learned to TRUST GOD because where God guides, God provides!

Attendance was an average of about 92 kids per night. Of the 124 total, a full 50% indicated no church affiliation, 27% are from other congregations, and 23% are RLC members.

The kids who indicated they have a church home come from 13 different congregations, and represent five different denominations (Baptist, Lutheran, Alliance, Catholic, Church of God), one Latter Day Saint, and one participant who put "Super Kids!" as her home church.



We give thanks to God for bringing nearly 70 volunteers to this ministry from RLC and our community! Community volunteers include those from the Journey with Christ and Walk with Christ groups, Boy Scouts, and members from the Chinese Alliance Church. If you are one of those many, know that you are very appreciated! From tribe leaders, to tent hosts, station leaders, decorations crew, registration crew, and song team leaders — your partnership in sharing the Gospel of Christ to our community is treasured. And, a very special THANK YOU to the catering committee for their faithful service in preparing and serving a dinner each night to the crowd. What a blessing it is to share in a meal together as God's family.

If you missed VBS this year, mark your calendar now for an Expedition to Mt. Everest, June 22-26, 2015!

July's "Items of the Month" are: Toddlers (boys & girls) ages 2-4
Suggestions include: Toys, board books, small stuffed animals, socks, t-shirts, shorts, flip flops, soft-covered balls, dolls, playdough.

Please NO liquids, toy-weapons or war-related toys (i.e. army men, etc).

They can be placed in the Christmas-y box near the mailboxes in the Prince of Peace fellowship area. Our goal for 2014 is at least 350 boxes. We believe by spreading the collection process out over the entire year, we should be able to reach, and hopefully surpass, this number!

Thank you for your help in making this a year-round ministry! For more info contact Jenny Page (jenny.page@richlandlutheran.org)



Youth Activities

Middle School!

Grades 6-8

WILD is taking a break for the summer...but we'll return in September with more great ministry for Middle Schoolers!

Current 8th graders can sign up for this year's **High School Beach Trip** to Seaside, OR. Dates are July 20-27, and the cost is \$350 (discounts available for families with multiple youth attending). **A \$150 non-refundable deposit is due July 1st.**

Our annual Waterpark/Lock-in will be in August!!! If you are currently in 8th grade, or entering middle school, you are invited to a day at the Moses Lake Waterpark followed by a lock-in at the church. More info will be in next month's *Preview!* Sign up by Corey's office!

High School!

Grades 9-12

Sunday Night Coffeehouse

(6:30 PM in the High School Room) This is our weekly meeting for high school students. We spend time worshiping, playing, laughing, discussing, learning, praying...among other things! Friends are always welcome!

High School Beach Trip!!!

Sign up now for this year's trip to Seaside, OR! The dates are **July 20-27**, and we'll be returning to the Seaside International Hostel. This is our 15th year of Beach Trips so this year will be extra special.

Cost is \$350 (discounts available for families with multiple youth attending). **A \$150 non-refundable deposit is due July 1st.**

RLC Community Work Day - Thanks to our Volunteers!



Removing sod for the city

Spreading landscape rock



Laying sod at an RLC property

2nd Harvest Returns to RLC



*Thrivent Financial
for Lutherans™*



A Mobile Food Bank is coming to your area soon!

Thanks to the **Benton County Thrivent Chapter**
and **Richland Lutheran Church**

- ❖ **FREE FOOD!** Free produce, nutritious perishable products and other groceries for ALL families in need of food assistance.
- ❖ **OPEN TO THE PUBLIC!** No appointment or documentation necessary to participate.
- ❖ If you are picking up for someone who cannot be present, please provide a note.

WHEN: Wednesday, August 6th 11a.m. - 1p.m.

WHERE: Parking Lot of
Richland Lutheran Church
901 Van Gieson
Richland, WA 99354

CONTACT: For more information, please contact:
Jon at (509) 375-5360; or 943-3164
The 24-HOUR Mobile Food Bank Information Line (509) 252-6270

Contact: Greg Worch at (208) 245- 5420 or
24hr.Mobile Food Bank Information line at (509) 252-6270

**** PLEASE BRING A BOX FOR YOUR FOOD ****

Worship Support

	<i>Time</i>	<i>Sunday July 6</i>	<i>Sunday July 13</i>	<i>Sunday July 20</i>	<i>Sunday July 27</i>
<i>Church Friends</i>	8:30 AM	Lois Harrold	Fishers of Men	Carol Schmid	Carleen and Len Lust
	10:15 AM	Karen Clark	Kathy & Rick Snyder	LaVonne Scully	Debbie Honeyman
<i>Lectors</i>	8:30 AM	Kathy Killand	Dolores Jaech	Lois Harrold	Jim Peterson
	10:15 AM	Karen Clark	Valerie Bettinson	Alicia Phaneuf	Elaine Keyes
<i>Ushers</i>	8:30 AM	H - Eunice Weible Gary Weible A - John Lesser Kiane Lesser	H - Chuck McCargar Sue McCargar A - Larry Haler Harold Hogue	H - Mac Dixson Fred Kremmer A - Jim Peterson Bruce Lander	H - Larry Corning Dave Larkin A - Jon Erlandson Laura Stevens
	10:15 AM	H - Carol Hexum Alan Hagensen A - Jean Loss Jim Loss	H - Mike Bettinson Valerie Bettinson A - Janet Budzeck Rick Budzeck	H - Janet Budzeck Rick Budzeck A - Mike Strasburg Charles Rogers	H - Jean Loss Jim Loss A - Kathy Snyder Rick Snyder
<i>Acolytes</i>	8:30 AM	Adam Pilger Kayla Peterson	Morgan Oberlander Anna Lesser	Kjerstyn Jordheim Robert Warren	Josh Mars Mikayla Mars
	10:15 AM	Nathan Ernst Spencer Hoffner	Jennifer Williams Carlyle Keyes	Daniel Miles Coley Levin	Conner Budzeck Madelaine Haynie
<i>Setup/Cleanup Communion</i>	Saturday 5:00 PM	Carl and Judy Schroeder	Joanne Woehle	Dave and Ann Brandes	Carl and Judy Schroeder
<i>Cleanup/ Setup Communion</i>	Sunday After 8:30 AM	Carol Schmid Joanne Woehle	Lois Harrold Karin Nickola	Pam Warren Rick Nunamaker	Mike and MaryJo Schroeder
<i>Clean Up Communion</i>	After 10:15 AM	MaryJo Schroeder	Kelly Westlund	Doloros Erickson	Kelly Westlund
<i>Communion Assistants</i>	8:30 AM	Sara Gillette Norm Gillette Marge Hogue	Clarine Watkins Larry Haler Jenifer Haler	Charles Davis Elaine Davis Kathy Killand Jenifer Haler	Clarine Watkins Jenifer Haler Sue Meek ****
	10:15 AM	Karen Clark Kelly Westlund Ginnette Ernst	Jenny Page **** ****	Amy Sperline Jeff Sperline Dawn Salyer ****	Mike Bettinson Valerie Bettinson Ginnette Ernst ****
<i>Children's Church Leaders</i>	8:30 AM	**** ****	Lori Lachut ****	John Huebner Karen Juergens	**** ****
	10:15 AM	Pam Hedges Kira Westlund	Julie Bishop ****	Trina Miles Andrew Miles	Melissa Schmid Sarah/Katie Schmid
<i>Producer/ Audio Mix</i>	8:30 AM	Bob Thompson Larry Haler	Bob Thompson	Bob Thompson	Bob Thompson
<i>Tech Director/ Live Stream Coord</i>	8:30 AM	Jim Moran	Mike Stankovich	Brian Killand	Jim Moran

Worship Support, Continued

	<i>Time</i>	<i>Sunday July 6</i>	<i>Sunday July 13</i>	<i>Sunday July 20</i>	<i>Sunday July 27</i>
<i>Cameras</i>	8:30 AM	1 - Fred Kremmer 2 - Ken Meek	1 - Traci Moran 2 - Don Schmid	1 - Robert Warren 2 - Paul Hedges	1 - Ryan Warren 2 - Larry Haler
<i>Editor/ Post Prod.</i>	8:30 AM	Ben Barr	Bob Thompson	Karen Rogers	Mike Stankovich
<i>Sound System Operators</i>	8:30 AM	Chuck Richardson	Chuck Richardson	Chuck Richardson	****
	10:15 AM	Jeff Dagle	Jeff Dagle	Tammy Carswell	****
<i>Offering Custodians</i>	Sat. 5:00	Rob Barr	****	****	****
	8:30 AM	Lois Harrold Gary Weible	Larry Harrold Harold Hogue	Fred Kremmer Jim Peterson	Jon Erlandson Larry Harrold
	10:15 AM	Alicia Phaneuf Alan Hagensen	Rick Budzeck Rich Barchet	Jana Strasburg Mike Stankovich	Rick Budzeck Valerie Bettinson
<i>Cashiers</i>		Kay Aase Debbie Honeyman	Nancy Ballard Doris Barchet	Judy Riggers Marge Hogue	Kathy Snyder Lori Hogan
<i>Recycle</i>		Carol Schmid	Fred Kremmer	LaVonne Scully	Jeff & Heidi Dagle
<i>Flowers</i>				Carol Hexum	

Save the Date

RLC BLOCK PARTY



Saturday, September 6

from 4-7 PM

at Steven's Park

**Come help serve our neighborhood
at our 4th Annual Block Party.**

To join the planning team, contact Ginnette Ernst at ginnette.ernst@gmail.com.

Anniversaries & Birthdays

ANNIVERSARIES

July 1
Heidi & Jeff Dagle

July 4
Karen & Mike Schwartz

July 5
Darlene & Harold Kjarmo

July 6
Teri & Steve Einan

July 7
Brenna & Justin Destito
Shaune & Charles Salter
Jane & Dick Stephens

July 9
Julie & Jim Gearheard

July 10
Chelsea & Joshua
Johnson

July 14
Susan & Charles
McCargar
Corki & Tim Mraz

July 15
Vicki & Darrel Glasford
Bev & Ron Hollenbeck

July 18
Karen & John Williams

July 19
Walker & Tom Miller

July 20
Jordan & Mitchell Davis
Norene & Jon Erlandson

July 23
Vickie & Greg Kelly
Pat & Rich Olenius

July 27
Liz & Russ Rodriguez

July 28
Gail & Randy Gilbertson

July 29
Patty & Peter Newton

July 30
Christina & David Schulz

July 31
Valerie & Mike Bettinson
Amy & Scott Johnson
Stacy & Shane
McCullough

BIRTHDAYS

July 1
Katherine Fulton
Patricia Lamberson

July 2
Ida Mae Darrington
Vickie Tisdale
Kyle Westlund

July 3
Owen Bratvold

July 5
Heather Drake
Kurtis Leitz
Pamela Warren

July 6
Aaron Sundal

July 7
Dick Arnst
Mike Hoffner
Susan McCargar
Steven Petersen
Tyler VanSant

July 8
Lisa Bartholomew
Charles Salter

July 9
Pastor Dave Hogan
Ashlee Tisdale

July 10
Tiffany Vopalensky
Rebecca Wedberg
Emma Whitney

July 11
Gloria Gibbons
Randy Gilbertson
Savannah Haynie
Roy Hibbard

July 12
Jerry Dagle
Anna Underwood
Spinato

July 13
Elliot Gardner

July 14
Rick Budzeck
Carleen Lust
Jackie Slonecker
Ashlynn Slougher
Dave Wunschel

July 15
Dianne Barry
Charles Cable
Sigrid Preston

July 16
Megan Hardman
Barbara Rau
Russ Rodriguez

July 17
Doris Barchet
Tom Bratvold
Bev Hollenbeck
John Madden
Gary Weible

July 19
Courtney Meigs

July 21
Tyler Conrad
Daniel Imhoff
Jason Schroeder

July 22
Aaron Purtzer

July 23
Norm Stout

July 24
Kristen Imhoff
Jerry Johnson
Kathy Myers

July 25
Wayne Campbell
Debra Cole
Shane McCullough
Eileen McVea
Loris Tellefson

July 26
Lisa Rogers Bryson
Pat Dalpiaz
Brayden Femreite

July 27
Andrea Crisp
Natalie Hobbs
Tracy Kissire
Al Stolte
Bob Thompson
Shane Thorson
Trond Tilton

July 28
Grace Corning
Abigayle Smith

July 29
Harrison Budzeck
Katie Maier
Quinn Wright-Mockler

July 30
Gregor Hanson
Felix Quinn
Sandy Steele
Robert Warren

July 31
Barbara Cunningham
Connie Distefano
Sonja Drake



Richland Lutheran Church, LCMC
901 Van Giesen
Richland, WA 99354

MONTHLY PUBLICATION

RETURN SERVICE REQUESTED



Worship Schedule

Traditional Worship with Holy Communion
Sundays at 8:30 AM

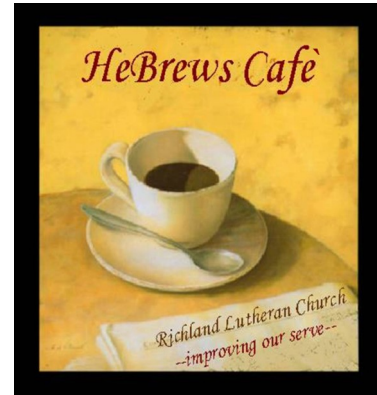
Worship with Holy Communion
Sundays at 10:15 AM

Worship with Holy Communion
Saturdays at 5:00 PM

*And when circumstances beyond your control prevent
you from coming to church . . .*

Good News Today
Aired Sunday mornings on
KVEW 42 and KAPP 35 at 9:00 AM

***Audio files of sermons are available on the website:
www.richland-lutheran.org***



***Come to HeBrews Café Sunday mornings,
between 9:45 AM and 10:15 AM***

***It's where Richland Lutheran Church members are re-
freshed, rejuvenated, and renewed for work in the
Kingdom!***

***There are still some Sundays available for serving.
Sign up on the bulletin board in the narthex.***

Equipping. Empowering. Encouraging.

We are a congregation of Christ followers who are making Jesus Christ known to all people and advancing His Kingdom.